



# MARSEILIA BEACH

RAS EL HEKMA

*Five*

بحر.. يرد الروح



لشيد لبنى حياة

Call Center

**19071**

From around the world

002 02 19071



*Our Location*

Nestling along the exquisite Ras El Hekma, the 500-meter beachfront project, offers a tranquil location in the heart of the immense Mediterranean.  
 Situated at 210 km on the Alexandria-Matrouh road, Marselia Beach 5 is built on 134.5 acres, which makes it the perfect spot for relaxation in the sun, on the idyllic landscape and along the fine sands of the coastline.

# Master Plan



*Vista* Villa



# vista

450 m<sup>2</sup>

## GROUND FLOOR

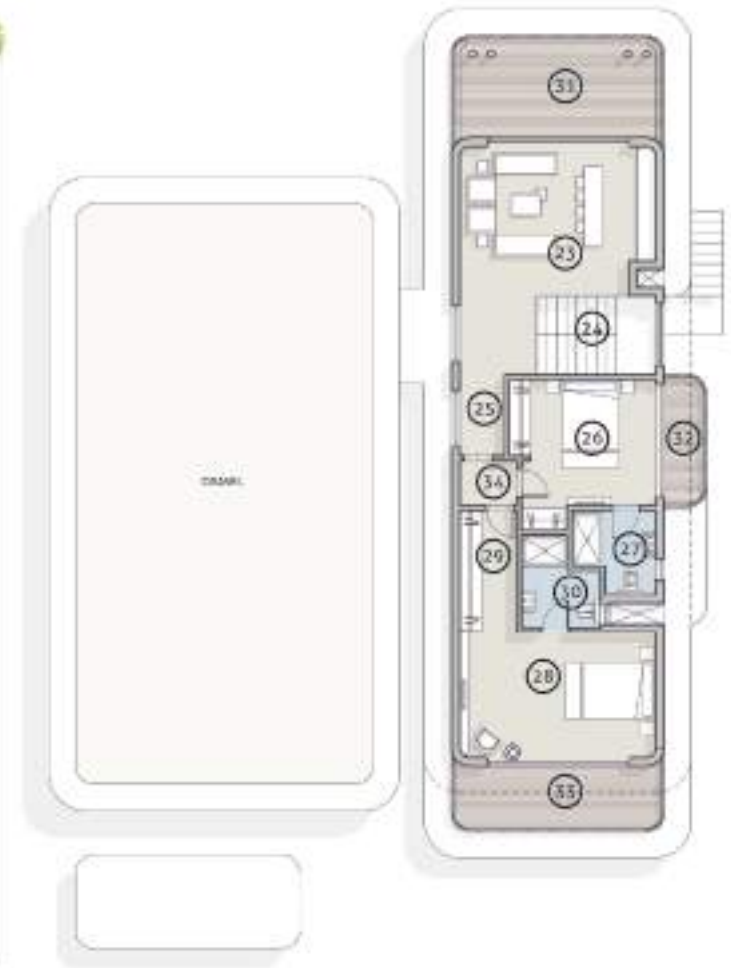
01. Reception	8.30 x 7.30 m <sup>2</sup>
02. Dinning	5.25 x 5.10 m <sup>2</sup>
03. Kitchen	3.20 x 5.25 m <sup>2</sup>
04. Hall 01	1.95 x 1.35 m <sup>2</sup>
05. Maid's room	1.90 x 2.40 m <sup>2</sup>
	0.60 x 1.90 m <sup>2</sup>
06. Maid's toilet	1.90 x 1.80 m <sup>2</sup>
07. Guest toilet	2.35 x 1.85 m <sup>2</sup>
08. Storage	1.60 x 3.70 m <sup>2</sup>
09. Drivers' room	4.05 x 2.60 m <sup>2</sup>
10. Driver's toilet	2.60 x 2.20 m <sup>2</sup>
11. Hall 02	1.55 x 2.20 m <sup>2</sup>
12. Master bedroom 01	5.95 x 4.35 m <sup>2</sup>
13. Master dressing area 01	1.80 x 2.90 m <sup>2</sup>
14. Master bathroom 01	2.55 x 2.10 m <sup>2</sup>
	1.80 x 0.80 m <sup>2</sup>
15. Hall 03	1.55 x 7.50 m <sup>2</sup>
16. Staircase	4.40 x 2.35 m <sup>2</sup>
17. Master bedroom 02	4.40 x 4.40 m <sup>2</sup>
18. Master bathroom 02	3.35 x 1.80 m <sup>2</sup>
19. Guest suite	5.95 x 4.05 m <sup>2</sup>
20. Guest dressing area 01	2.60 x 4.30 m <sup>2</sup>
21. Guest bathroom 01	3.35 x 1.65 m <sup>2</sup>
	1.80 x 0.90 m <sup>2</sup>
22. Bridge	2.60 x 2.25 m <sup>2</sup>

## FIRST FLOOR

23. Lounge	5.95 x 4.40 m <sup>2</sup>
24. Staircase	4.40 x 2.30 m <sup>2</sup>
25. Hall 04	4.60 x 1.55 m <sup>2</sup>
26. Master bedroom 03	4.40 x 3.70 m <sup>2</sup>
27. Master bathroom 03	2.65 x 1.65 m <sup>2</sup>
	1.70 x 1.00 m <sup>2</sup>
28. Master bedroom 04	5.95 x 3.80 m <sup>2</sup>
29. Master Dressing area 04	1.90 x 3.45 m <sup>2</sup>
30. Master bathroom 04	1.70 x 2.40 m <sup>2</sup>
	1.40 x 1.00 m <sup>2</sup>
31. Terrace 01	5.95 x 2.90 m <sup>2</sup>
32. Terrace 02	3.75 x 1.20 m <sup>2</sup>
33. Terrace 03	5.95 x 1.85 m <sup>2</sup>
34. Hall 05	1.90 x 1.40 m <sup>2</sup>



GROUND FLOOR



FIRST FLOOR

**TONO** *Twin House*



# TONO

220 m<sup>2</sup>

## GROUND FLOOR

01. Living Area	6.00 x 5.15 m <sup>2</sup>
02. Dinning	5.65 x 4.15 m <sup>2</sup>
03. Kitchen	3.90 x 3.10 m <sup>2</sup>
	1.95 x 1.00 m <sup>2</sup>
04. Staircase	1.05 x 4.65 m <sup>2</sup>
05. Guest toilet	2.00 x 1.40 m <sup>2</sup>
06. Storage	1.00 x 3.70 m <sup>2</sup>
07. Maid's room	2.00 x 2.50 m <sup>2</sup>
08. Mald's toilet	2.00 x 1.40 m <sup>2</sup>

## FIRST FLOOR

09. Master Bedroom	5.15 x 3.90 m <sup>2</sup>
10. Master Dressing Area	2.80 x 2.05 m <sup>2</sup>
11. Staircase	1.55 x 5.70 m <sup>2</sup>
12. Hall	1.25 x 5.70 m <sup>2</sup>
13. Bedroom 01	3.90 x 3.70 m <sup>2</sup>
	1.70 x 0.65 m <sup>2</sup>
14. Bedroom 02	5.15 x 3.85 m <sup>2</sup>
15. Bathroom 01	2.30 x 2.05 m <sup>2</sup>
16. Bathroom 02	2.30 x 2.00 m <sup>2</sup>
17. Terrace	4.00 x 1.00 m <sup>2</sup>

## ROOF FLOOR

18. Bedroom 03	3.90 x 3.85 m <sup>2</sup>
	1.70 x 0.65 m <sup>2</sup>
19. Staircase	2.80 x 6.00 m <sup>2</sup>
20. Bathroom 03	2.15 x 2.35 m <sup>2</sup>



GROUND FLOOR



FIRST FLOOR



ROOF FLOOR

Type

1, 2



odore Town House





# odore

175 m<sup>2</sup>

## GROUND FLOOR

01. Living area	4.10 x 6.20 m <sup>2</sup>
02. Lifestyle dining	5.10 x 3.70 m <sup>2</sup>
03. Kitchen	4.20 x 3.35 m <sup>2</sup>
04. Storage	1.50 x 2.05 m <sup>2</sup>
05. Hall 01	1.10 x 2.10 m <sup>2</sup>
06. Guest toilet	1.50 x 2.05 m <sup>2</sup>
07. Staircase	1.00 x 4.45 m <sup>2</sup>

## FIRST FLOOR

08. Master bedroom	4.10 x 3.80 m <sup>2</sup>
09. Dressing area	2.25 x 1.40 m <sup>2</sup>
10. Bedroom 01	3.70 x 3.85 m <sup>2</sup>
11. Bedroom 02	4.10 x 3.85 m <sup>2</sup>
12. Bathroom 01	1.20 x 1.55 m <sup>2</sup>
13. Bathroom 02	2.30 x 1.85 m <sup>2</sup>
14. Staircase	1.85 x 2.30 m <sup>2</sup>
15. Hall 02	5.45 x 2.25 m <sup>2</sup>
16. Terrace	1.55 x 1.05 m <sup>2</sup>
17. Kitchenette	3.05 x 4.55 m <sup>2</sup>
18. Staircase	1.05 x 4.55 m <sup>2</sup>

## ROOF FLOOR

17. Kitchenette	3.05 x 4.55 m <sup>2</sup>
18. Staircase	1.05 x 4.55 m <sup>2</sup>

Type

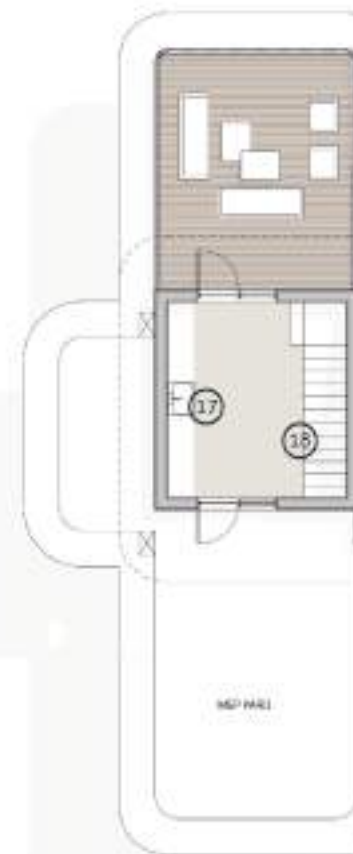
1, 3



GROUND FLOOR



FIRST FLOOR



ROOF FLOOR



# odore

200 m<sup>2</sup>

## GROUND FLOOR

01. Living area	5.70 x 5.05 m <sup>2</sup>
02. Lifestyle dining	3.90 x 5.05 m <sup>2</sup>
03. Hall	1.30 x 1.35 m <sup>2</sup>
04. Storage	1.30 x 2.65 m <sup>2</sup>
05. Kitchen	3.20 x 3.85 m <sup>2</sup>
06. Guest toilet	1.30 x 2.50 m <sup>2</sup>
07. Foyer	1.40 x 2.80 m <sup>2</sup>
08. Staircase	2.40 x 2.80 m <sup>2</sup>

## FIRST FLOOR

09. Master bedroom	3.85 x 3.80 m <sup>2</sup>
10. Bedroom 01	3.75 x 3.85 m <sup>2</sup>
11. Bedroom 02	0.60 x 2.45 m <sup>2</sup>
12. Bathroom 01	3.75 x 3.85 m <sup>2</sup>
13. Bathroom 02	0.60 x 2.45 m <sup>2</sup>
14. Dressing area	2.05 x 1.90 m <sup>2</sup>
15. Hall	2.05 x 3.20 m <sup>2</sup>
16. Staircase	3.40 x 1.20 m <sup>2</sup>
17. Terrace 01	3.75 x 4.00 m <sup>2</sup>
18. Terrace 02	2.05 x 1.55 m <sup>2</sup>
19. Terrace 03	3.40 x 1.20 m <sup>2</sup>
20. Staircase	3.75 x 4.00 m <sup>2</sup>
21. Kitchenette	2.40 x 4.15 m <sup>2</sup>

## ROOF FLOOR

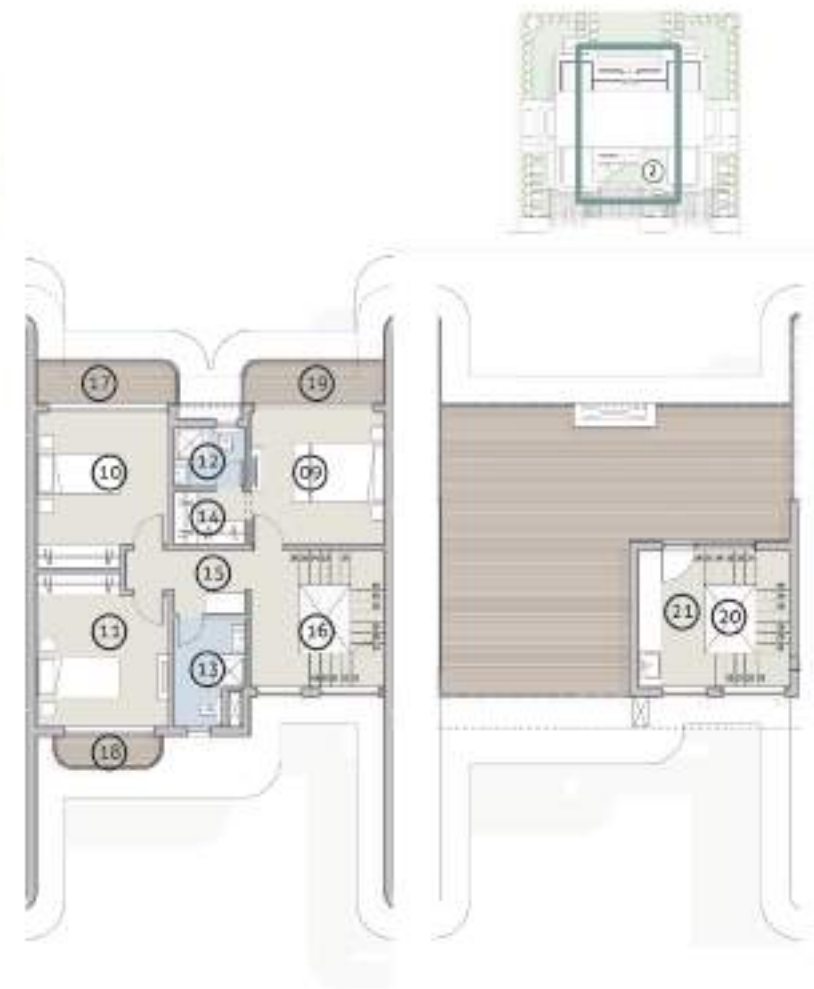
20. Staircase	2.40 x 4.15 m <sup>2</sup>
21. Kitchenette	2.00 x 4.15 m <sup>2</sup>

Type

2



GROUND FLOOR



FIRST FLOOR

ROOF FLOOR

Gusto Charlet



# Gusto

90 m<sup>2</sup>

## GROUND FLOOR

01. Kitchen	2.70 x 2.50 m <sup>2</sup>
02. Foyer	2.70 x 1.30 m <sup>2</sup>
03. Live / Dine	4.95 x 3.80 m <sup>2</sup>
04. Bedroom 01	4.05 x 3.90 m <sup>2</sup>
05. Bedroom 02	3.85 x 4.00 m <sup>2</sup>
06. Bathroom	2.55 x 1.90 m <sup>2</sup>
07. Hall	2.55 x 1.25 m <sup>2</sup>

## 2 BEDROOM APARTMENT

Type

1, 2, 3, 4



LAYOUT

# Gusto

95 m<sup>2</sup>

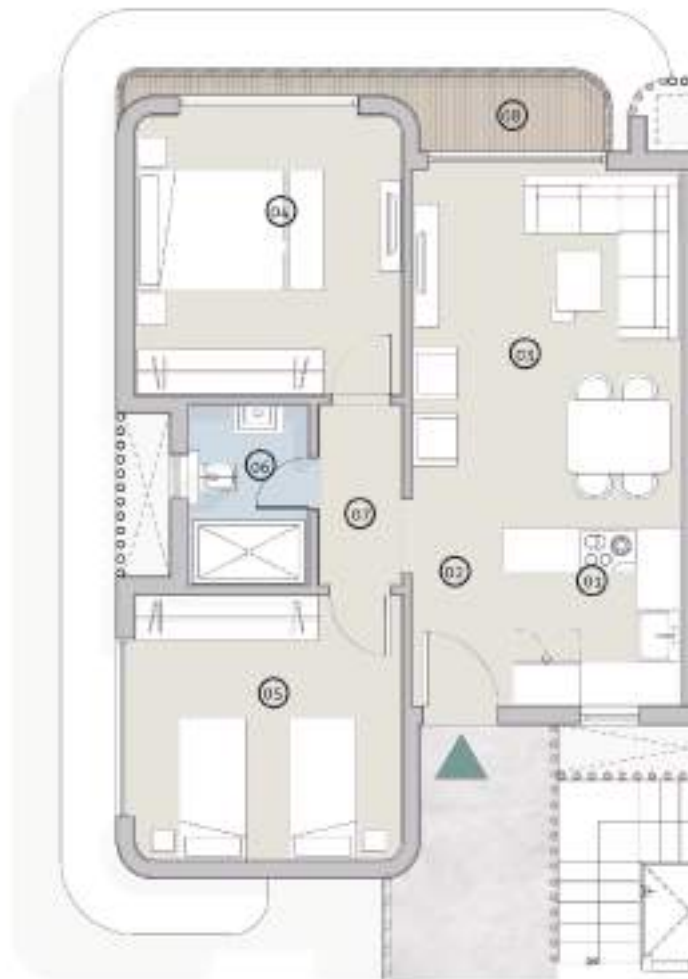
## TYPICAL FLOOR

01. Kitchen	2.70 x 2.50 m <sup>2</sup>
02. Foyer	2.70 x 1.30 m <sup>2</sup>
03. Live / Dine	4.95 x 3.80 m <sup>2</sup>
04. Bedroom 01	4.05 x 3.90 m <sup>2</sup>
05. Bedroom 02	3.85 x 4.00 m <sup>2</sup>
06. Bathroom	2.55 x 1.90 m <sup>2</sup>
07. Hall	2.55 x 1.25 m <sup>2</sup>
08. Terrace	2.70 x 1.15 m <sup>2</sup> 3.95 x 0.40 m <sup>2</sup>

## 2 BEDROOM APARTMENT

Type

1, 2, 3, 4



LAYOUT

TOCCO *Chalet*



# TOCCO

125 m<sup>2</sup>

## GROUND FLOOR

01. Foyer	3.00 x 1.30 m <sup>2</sup>
02. Living area	2.90 x 3.90 m <sup>2</sup>
03. Dining area	2.50 x 3.90 m <sup>2</sup>
04. Kitchen	3.00 x 2.90 m <sup>2</sup>
05. Master Bedroom	4.05 x 3.90 m <sup>2</sup>
	1.30 x 1.30 m <sup>2</sup>
06. Master Bathroom	2.55 x 1.90 m <sup>2</sup>
07. Bedroom 01	4.05 x 3.90 m <sup>2</sup>
08. Bedroom 02	4.05 x 3.75 m <sup>2</sup>
09. Bathroom	3.10 x 2.15 m <sup>2</sup>
10. Hall 01	1.60 x 1.30 m <sup>2</sup>
11. Hall 02	1.25 x 3.40 m <sup>2</sup>

## 3 BEDROOM APARTMENT

Type

1.4



LAYOUT

# TOCCO

55 m<sup>2</sup>

## GROUND FLOOR

01. Foyer	1.25 x 2.90 m <sup>2</sup>
	1.15 x 2.30 m <sup>2</sup>
02. Live/Dine	4.75 x 3.85 m <sup>2</sup>
03. Master Bedroom	4.00 x 3.85 m <sup>2</sup>
04. Bathroom	1.85 x 2.00 m <sup>2</sup>

## 1 BEDROOM APARTMENT

Type

2, 3



LAYOUT



# TOCCO

95 m<sup>2</sup>

## TYPICAL FLOOR

01. Kitchen	2.70 x 2.50 m <sup>2</sup>
02. Foyer	2.70 x 1.30 m <sup>2</sup>
03. Live / Dine	4.95 x 3.80 m <sup>2</sup>
04. Bedroom 01	4.05 x 3.90 m <sup>2</sup>
05. Bedroom 02	3.85 x 4.00 m <sup>2</sup>
06. Bathroom	2.55 x 1.90 m <sup>2</sup>
07. Hall	2.55 x 1.25 m <sup>2</sup>
08. Terrace	2.70 x 1.15 m <sup>2</sup> 3.95 x 0.40 m <sup>2</sup>

## 2 BEDROOM APARTMENT

Type

1, 2, 3, 4



LAYOUT



نشيد لبنى حياة



#ولسة\_مكملين